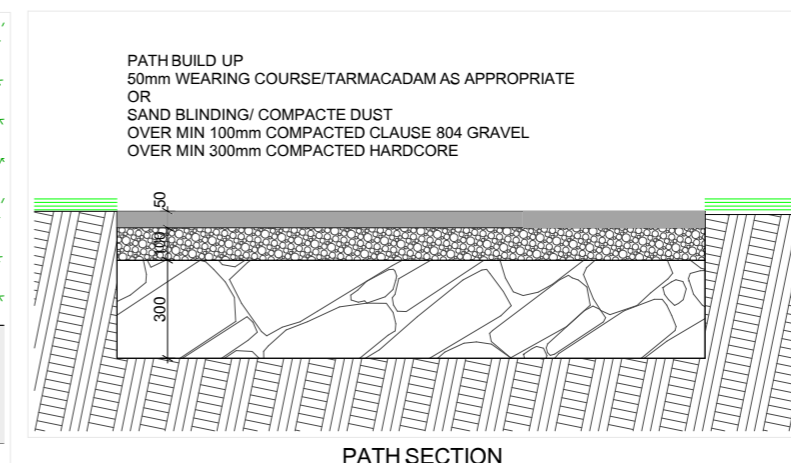
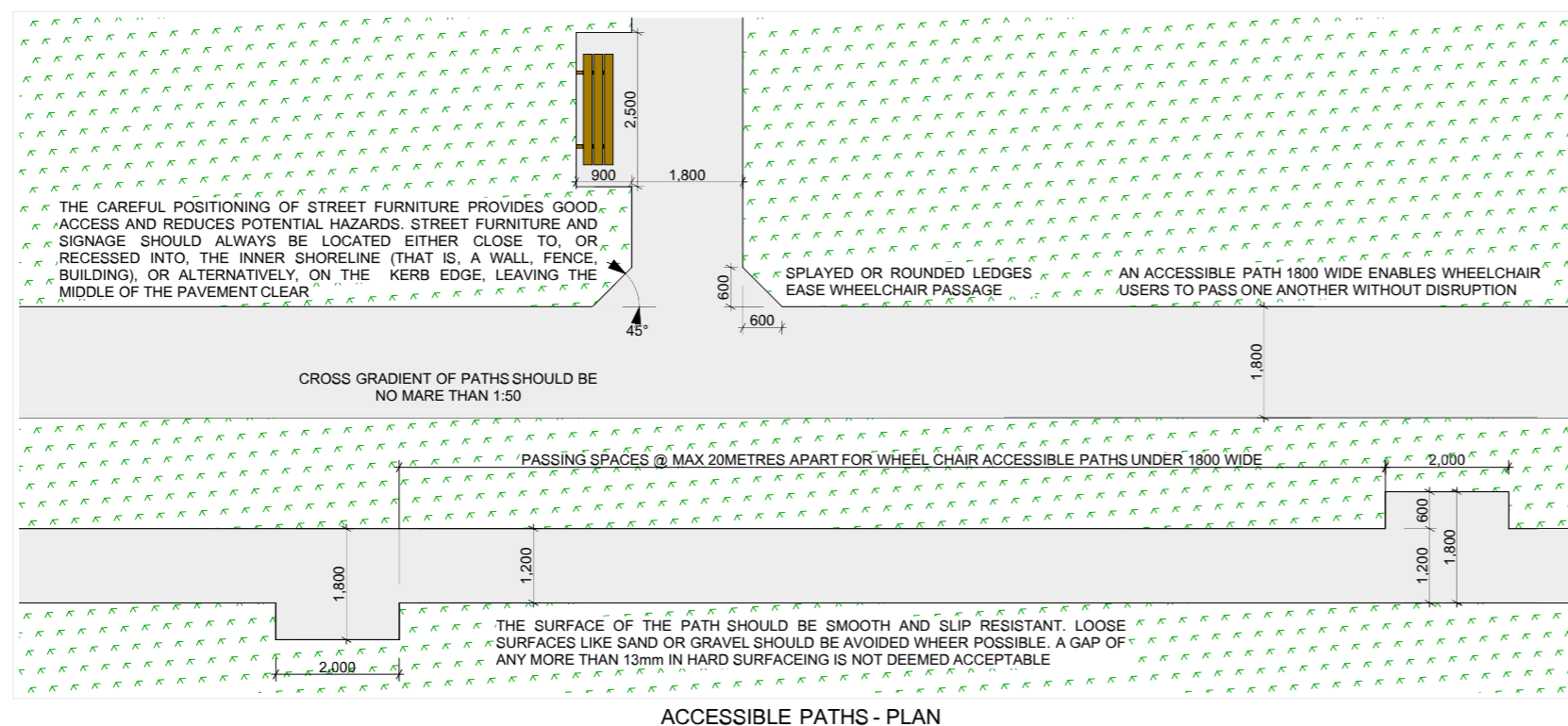
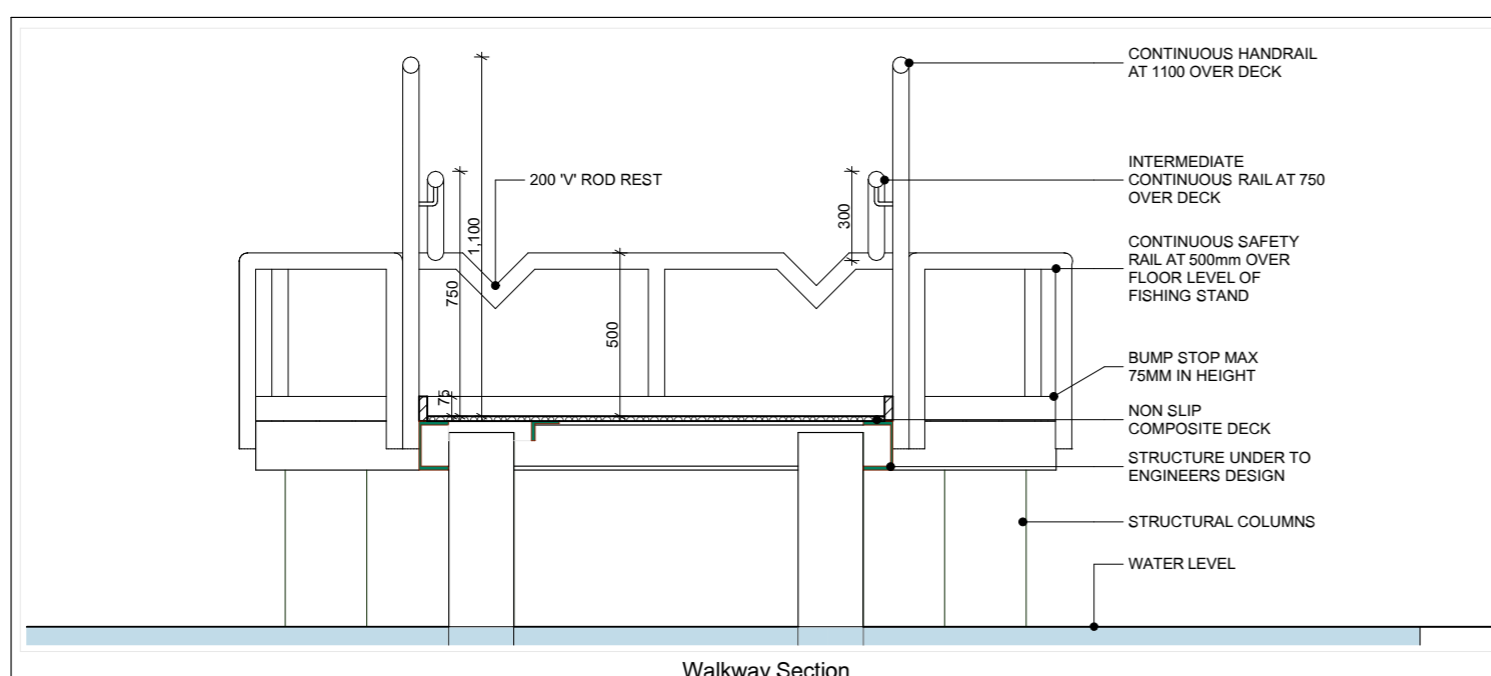




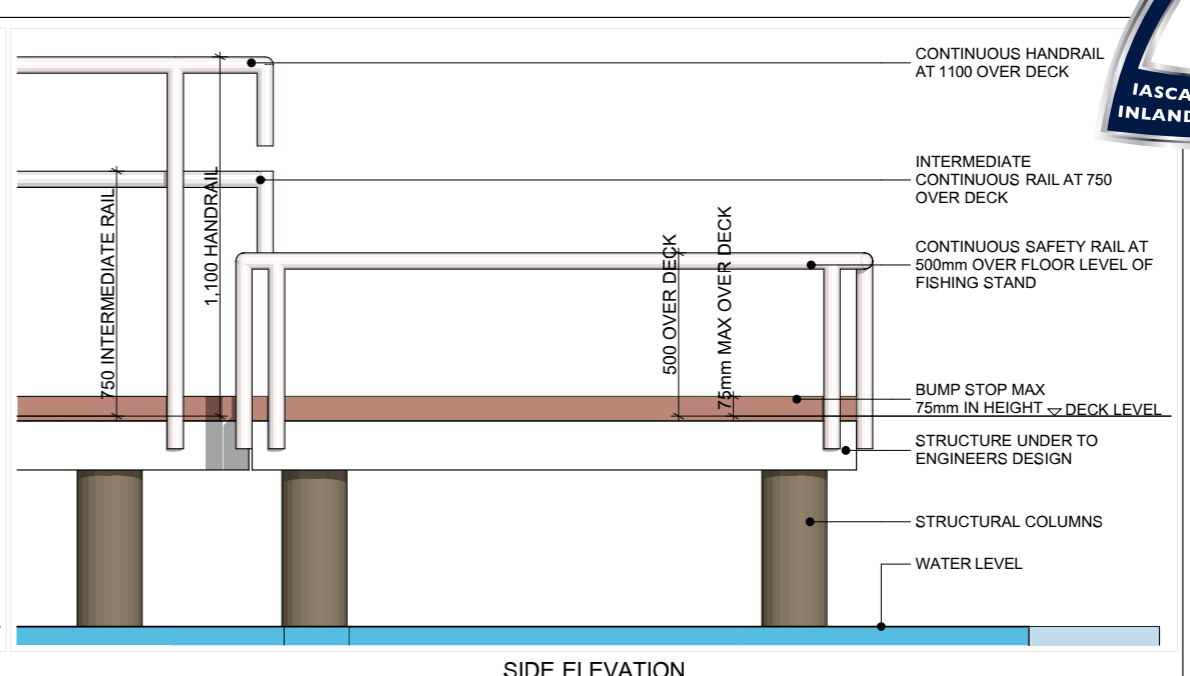
# SAMPLE SPECIFICATION DRAWINGS



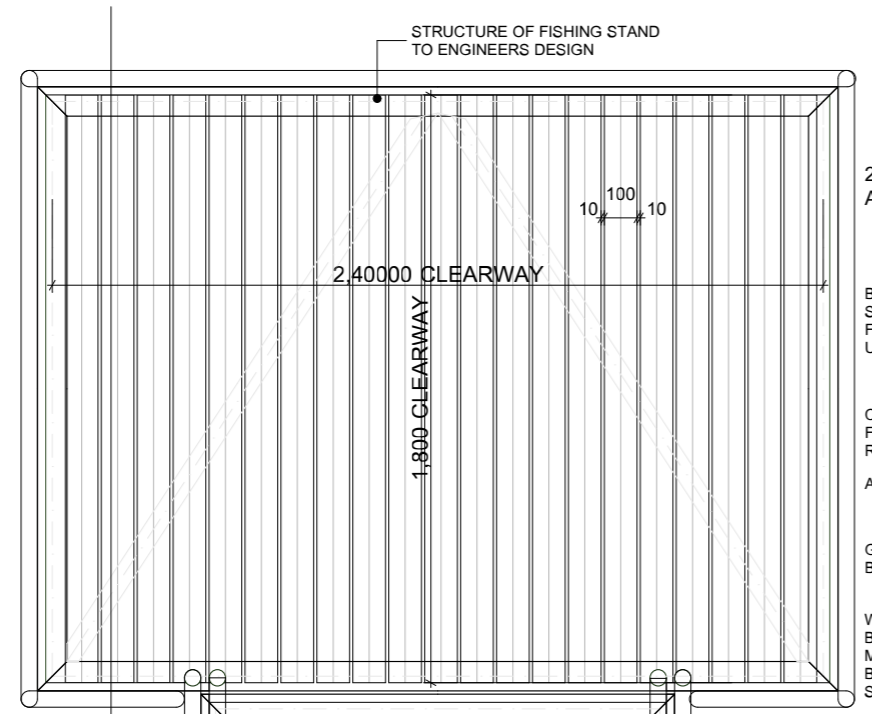
<b>C FLYNN ENGINEERING SERVICES MARINA SYSTEMS BELTURBET CO. CAVAN PH. 049 95 22821</b>	
PROJECT: <b>ACCESSIBLE PATHS</b>	
:	
CLIENT: <b>INLAND FISHERIES IRELAND</b>	
COPYRIGHT C FLYNN ENGINEERING	
DATE: 27.11.15	DRAWN BY: A FARRELLY
	REV: -



Walkway Section



SIDE ELEVATION



ACCESSIBLE FISHING STAND PLAN

For non accessible stands

Walkway 900 wide  
Angling Stand 2400 x 1200  
No railings are provided

BUMP STOP/ TAPPING RAIL TO EDGES OF WALKWAY (MAX HEIGHT 75MM) FOR WHITE CANE AND WHEEL CHAIR USERS

INTERMEDIATE CONTINUOUS RAIL @ 750MM OVER SLOPED DECK FOR WHEELCHAIR USERS

CONTINUOUS HANDRAIL @ 1100MM OVER FLOOR LEVEL  
ALL HANDRAILS MUST BE UNINTERRUPTED AND COMFORTABLE TO ALL USERS

GAP BETWEEN NON-SLIP DECKING BOARDS TO BE MAX 10MM

2400 x 1800 ACCESSIBLE ANGLING STAND

BUMP STOP/ TAPPING RAIL TO SURROUND STAND (MAX HEIGHT 75MM) FOR WHITE CANE AND WHEEL CHAIR USERS

CONTINUOUS RAIL @ 500MM OVER FLOOR LEVEL TO WALKWAY WITH 'V' ROD RESTS INCORPORATED

ALL RAILS MUST BE UNINTERRUPTED

GAP BETWEEN NON-SLIP DECKING BOARDS TO BE MAX 10MM

WHERE MORE THAN ONE ANGLER IS TO BE ACCOMMODATED, A DISTANCE OF 3 METRES IS TO BE MAINTAINED BETWEEN THEM, ANGLING STAND TO BE SIZED AT c.4.2 METRES X 1.8METRES

STRUCTURE UNDER TO ENGINEERS DESIGN

BUMP STOP MAX 75MM IN HEIGHT

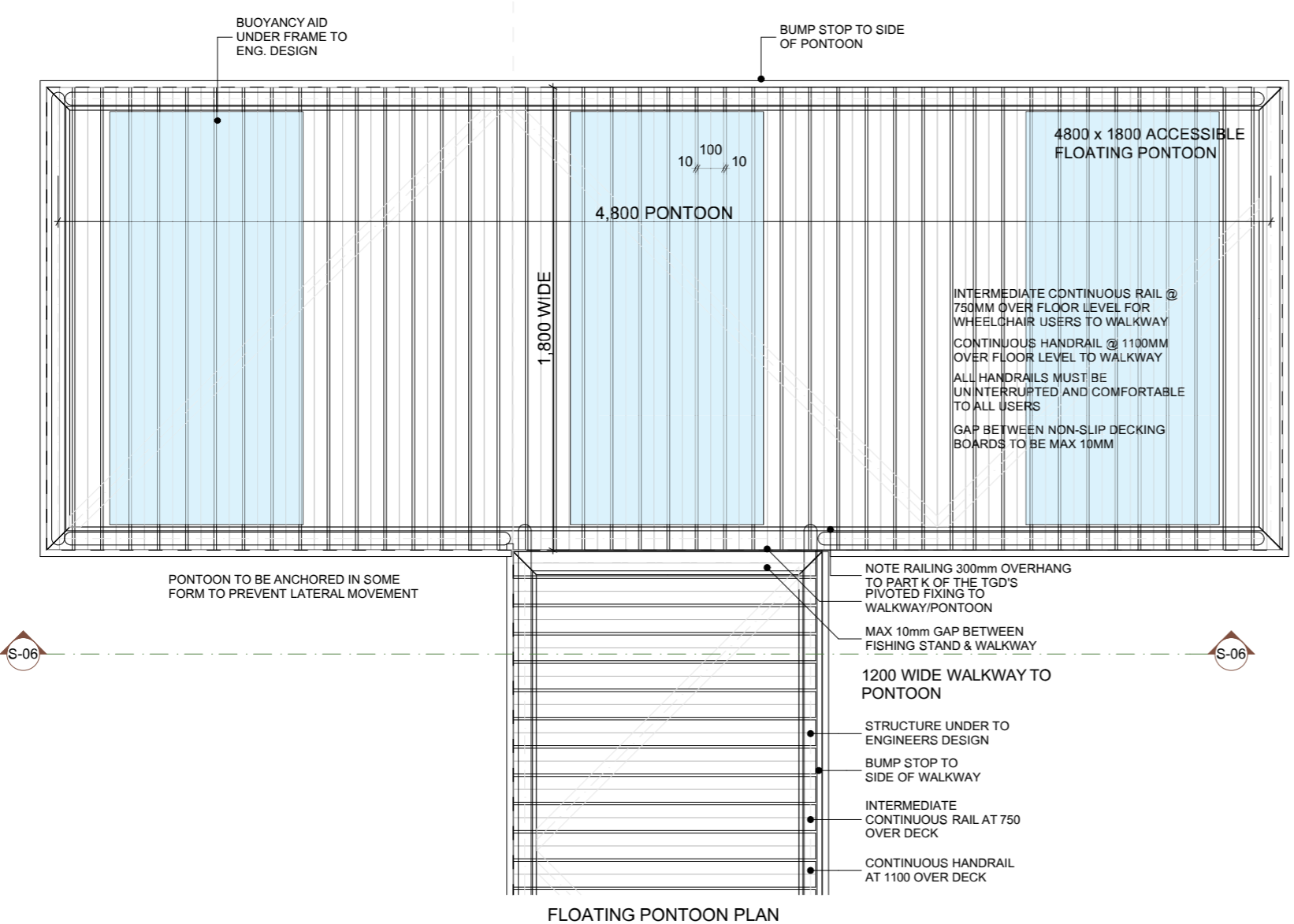
INTERMEDIATE CONTINUOUS RAIL AT 750 OVER SLOPED DECK

CONTINUOUS HANDRAIL AT 1100 OVER DECK

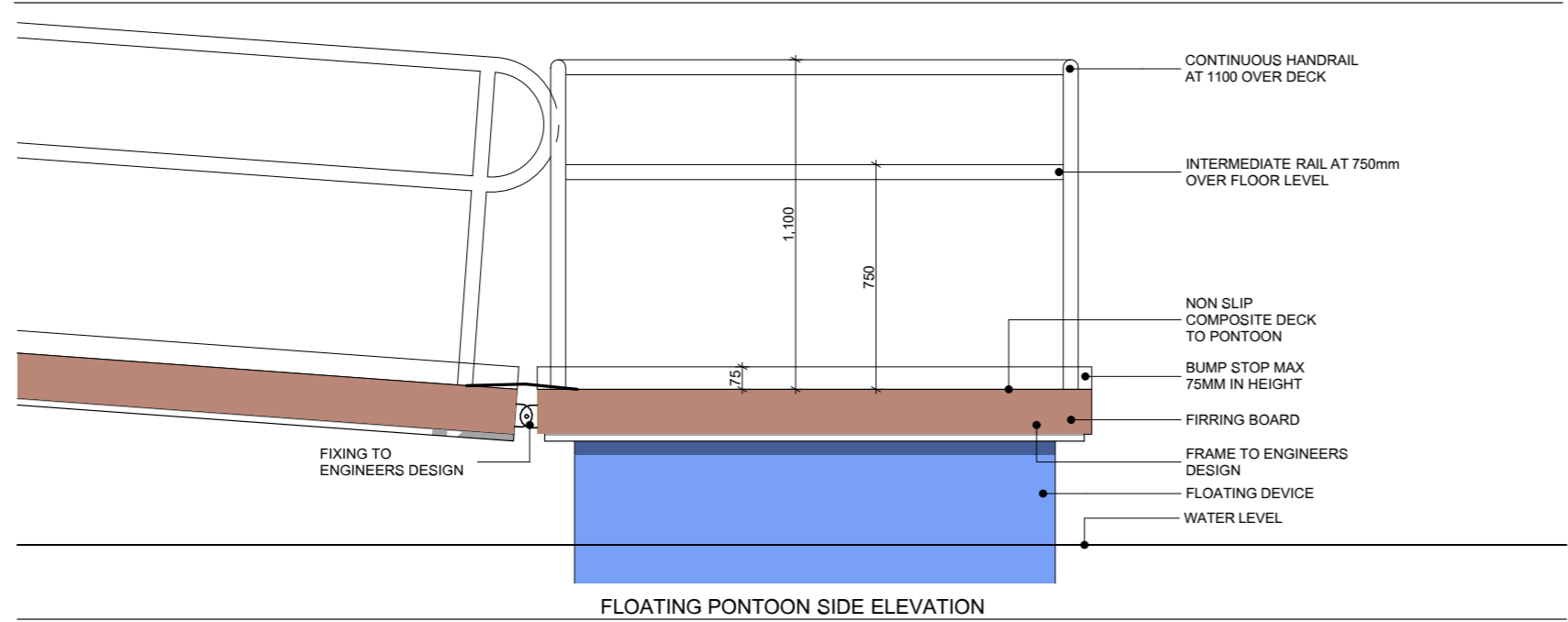
1200 WIDE WALKWAY



<b>C FLYNN ENGINEERING SERVICES MARINA SYSTEMS BELTURBET CO. CAVAN PH. 049 95 22821</b>	
PROJECT: <b>ACCESSIBLE ANGLING STAND &amp; CATWALK</b>	
:	
CLIENT: <b>INLAND FISHERIES IRELAND</b>	
COPYRIGHT C FLYNN ENGINEERING	
DATE: 27.11.15	DRAWN BY: <b>A FARRELLY</b>
	REV: -

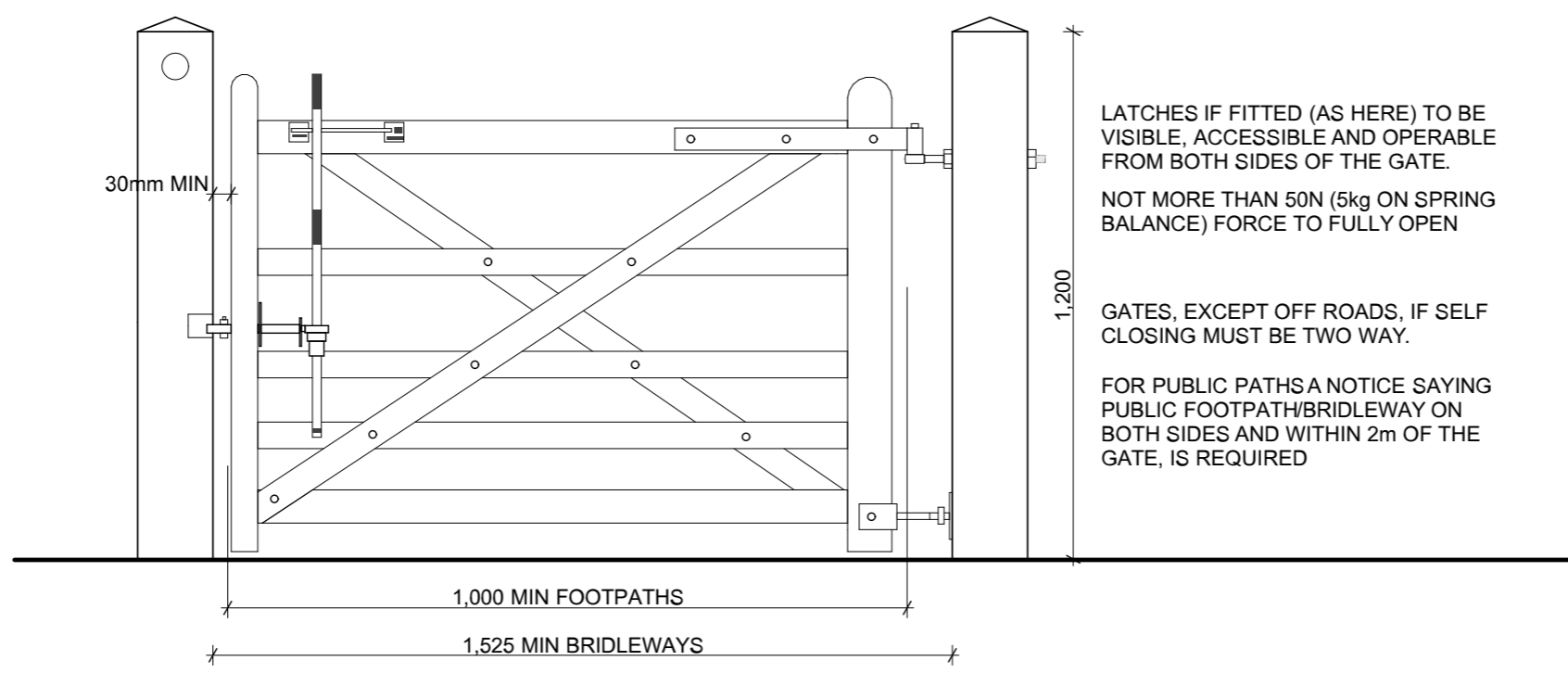


FLOATING PONTOON PLAN



FLOATING PONTOON SIDE ELEVATION

<b>C FLYNN ENGINEERING SERVICES MARINA SYSTEMS BELTURBET CO. CAVAN PH. 049 95 22821</b>	
PROJECT: <b>FLOATING PONTOON</b>	
:	
CLIENT: <b>INLAND FISHERIES IRELAND</b>	
COPYRIGHT C FLYNN ENGINEERING	
DATE: <b>27.11.15</b>	DRAWN BY: <b>A FARRELLY</b>
	REV: <b>-</b>



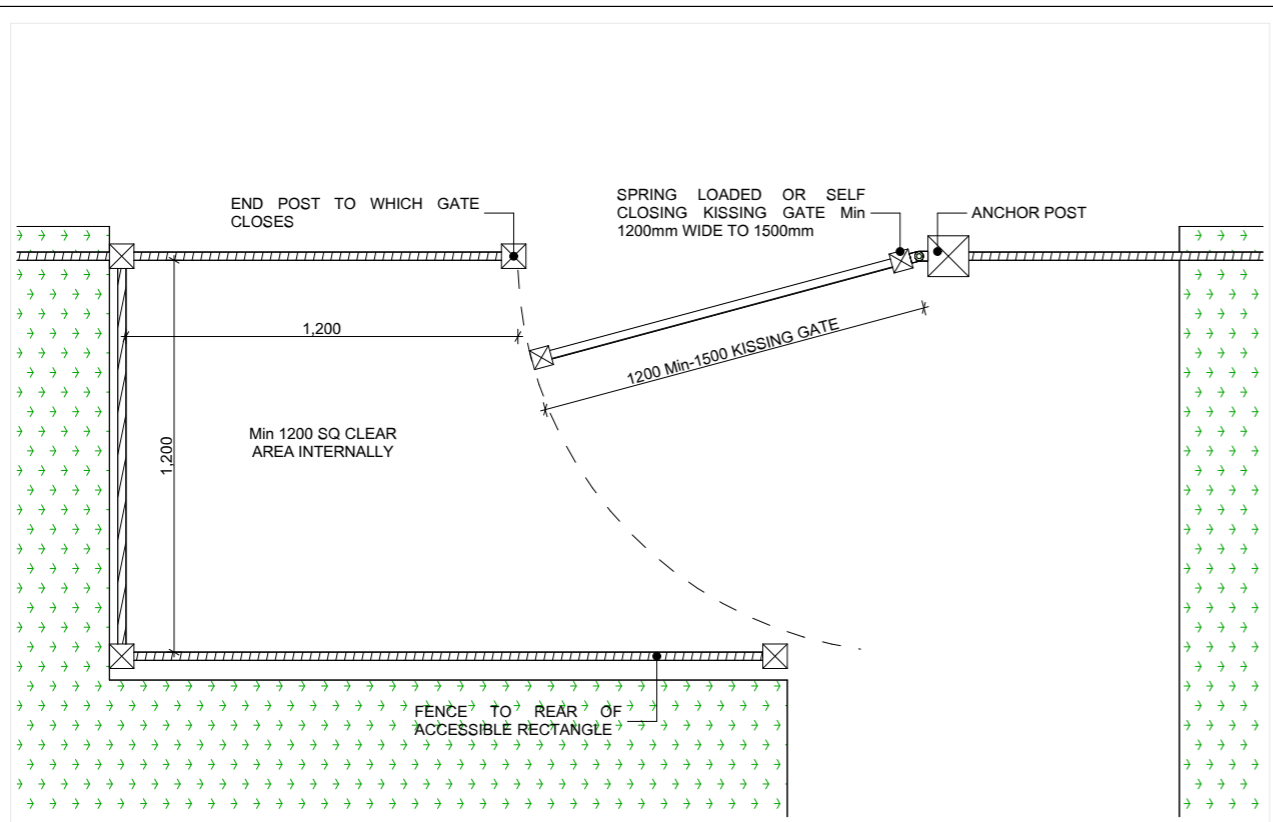
LATCHES IF FITTED (AS HERE) TO BE VISIBLE, ACCESSIBLE AND OPERABLE FROM BOTH SIDES OF THE GATE.  
 NOT MORE THAN 50N (5kg ON SPRING BALANCE) FORCE TO FULLY OPEN

GATES, EXCEPT OFF ROADS, IF SELF CLOSING MUST BE TWO WAY.

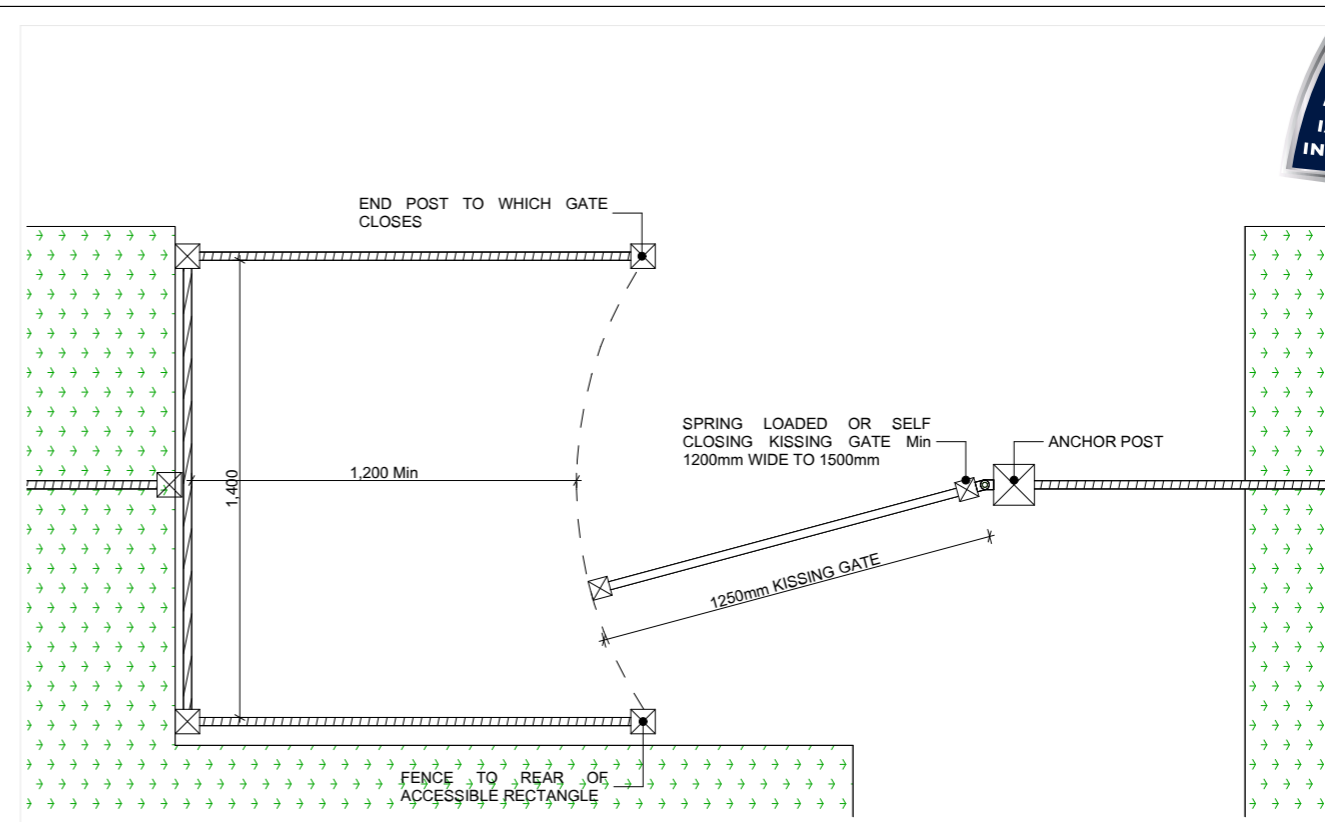
FOR PUBLIC PATHS A NOTICE SAYING PUBLIC FOOTPATH/BRIDLEWAY ON BOTH SIDES AND WITHIN 2m OF THE GATE, IS REQUIRED

BRIDLEWAY GATE DUAL ACCESS

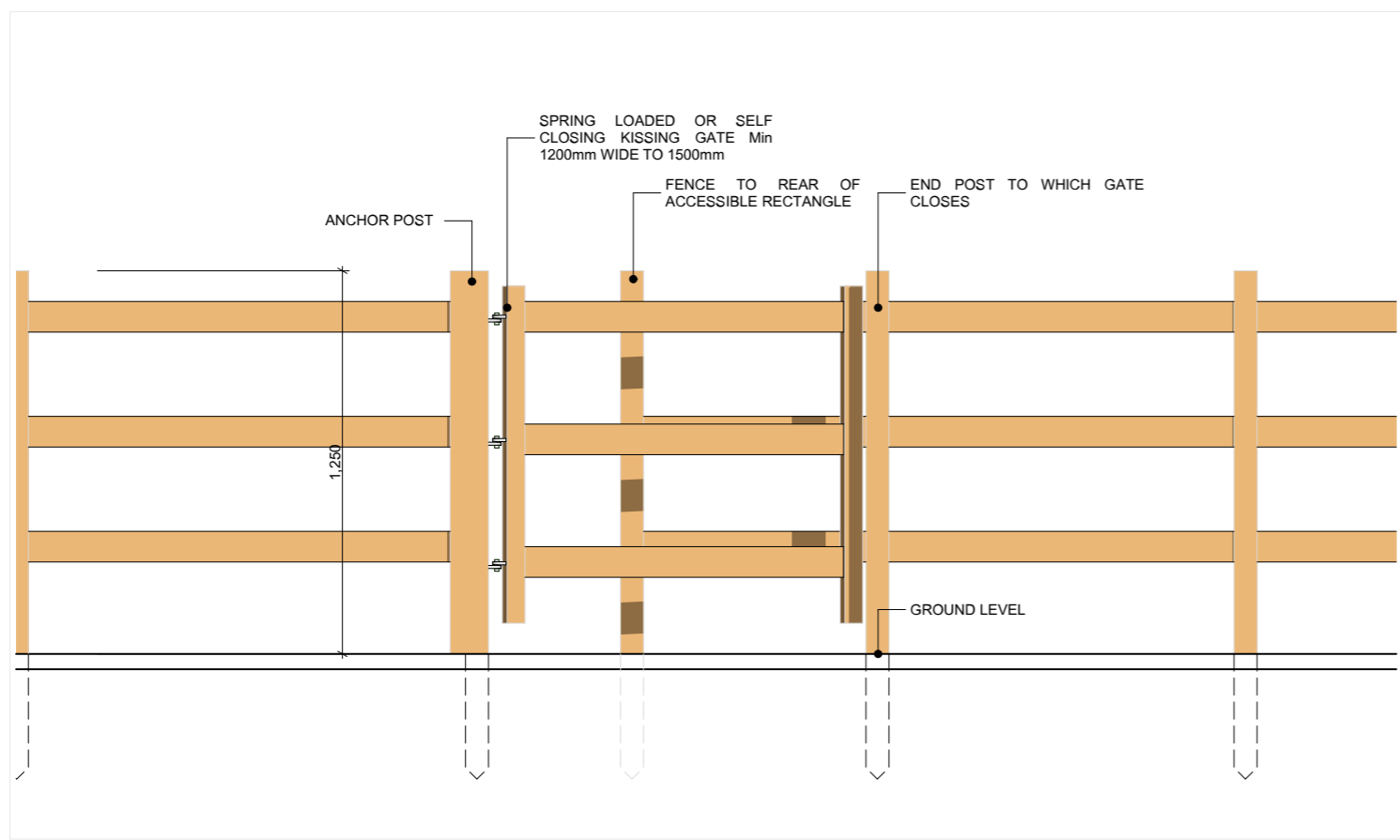
<b>C FLYNN ENGINEERING SERVICES                  MARINA SYSTEMS                  BELTURBET                  CO. CAVAN                  PH. 049 95 22821</b>	
PROJECT: <b>BRIDLEWAY</b>	
:	
CLIENT: <b>INLAND FISHERIES IRELAND</b>	
<small>COPYRIGHT © FLYNN ENGINEERING</small>	
DATE: <b>27.11.15</b>	DRAWN BY: <b>A FARRELLY</b>
	REV: <b>-</b>



KISSING GATE PLAN



ALTERNATIVE KISSING GATE PLAN

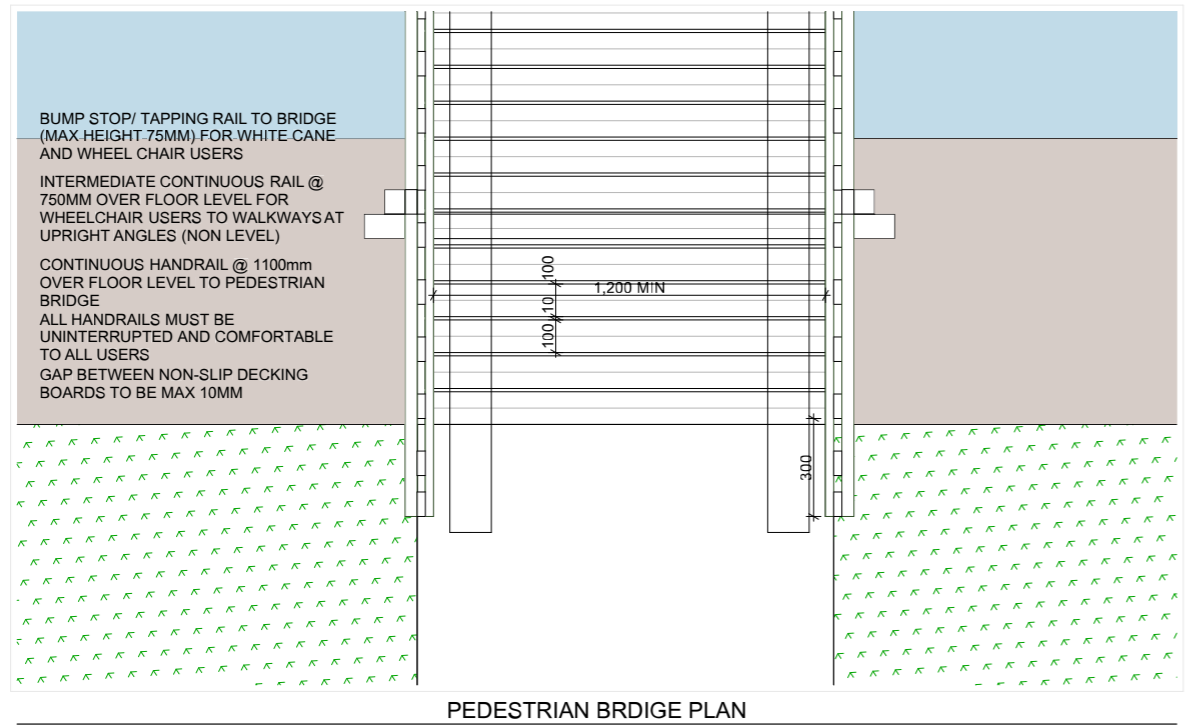
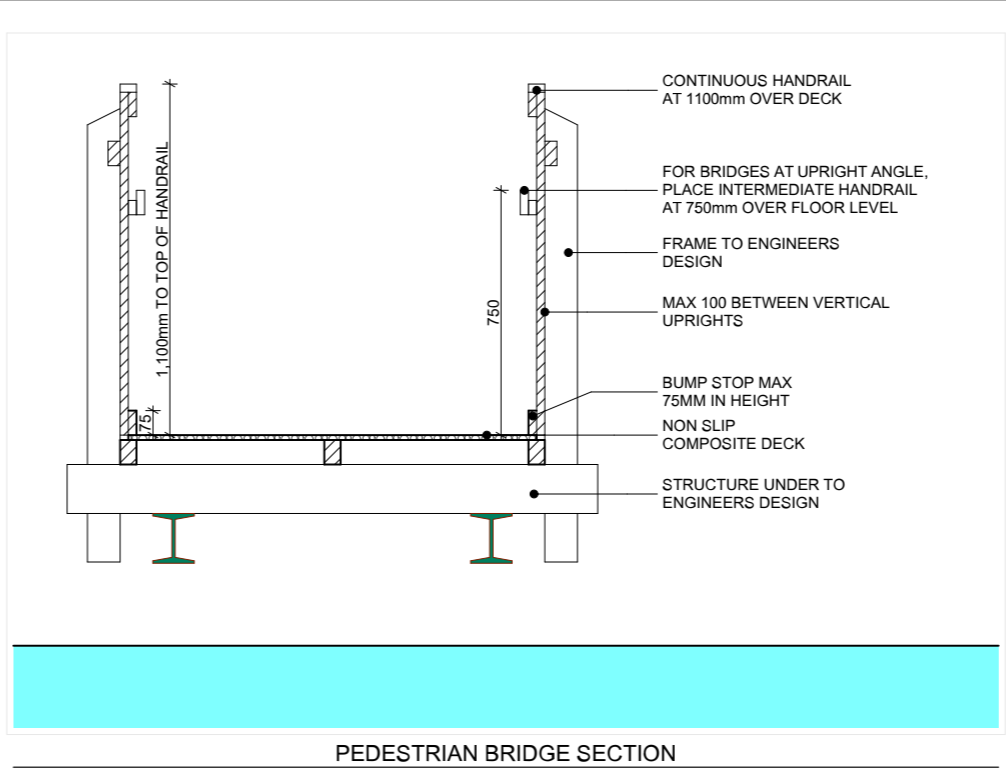
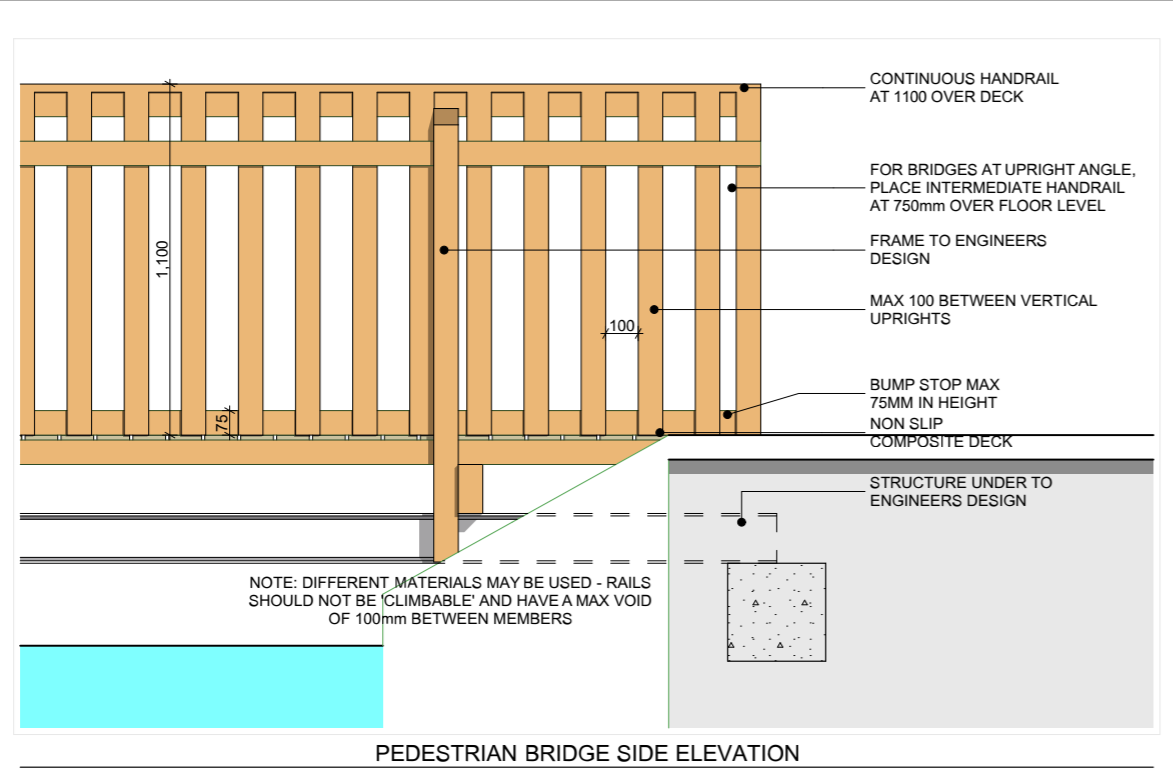


KISSING GATE ELEVATION

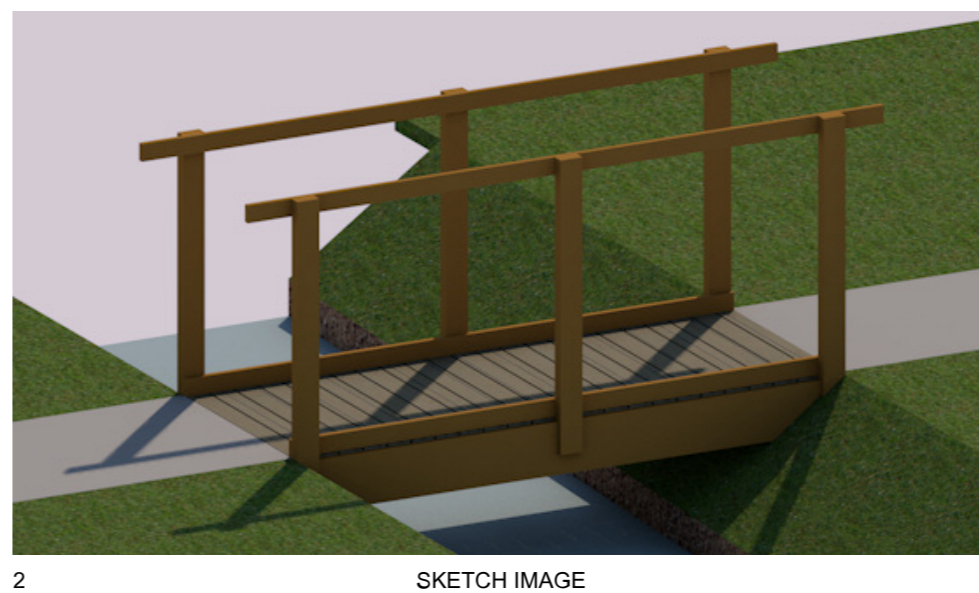
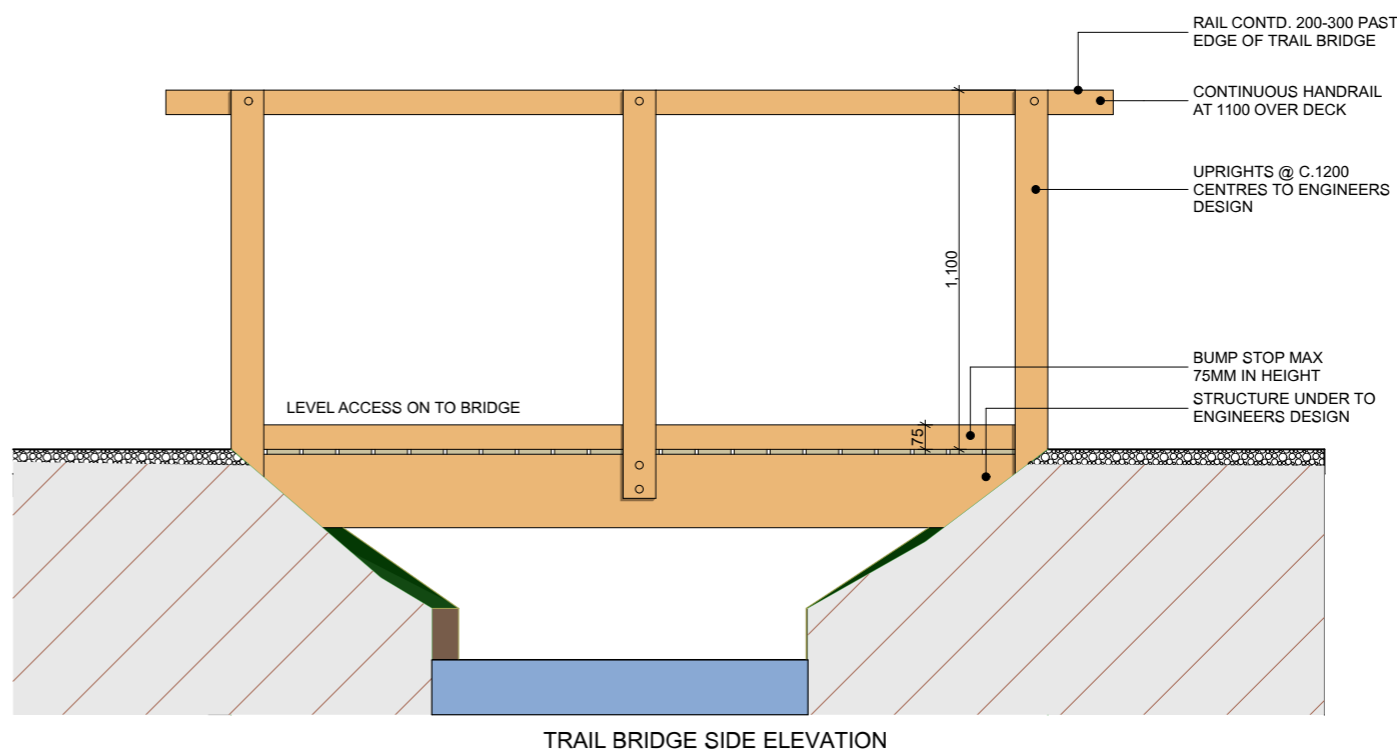
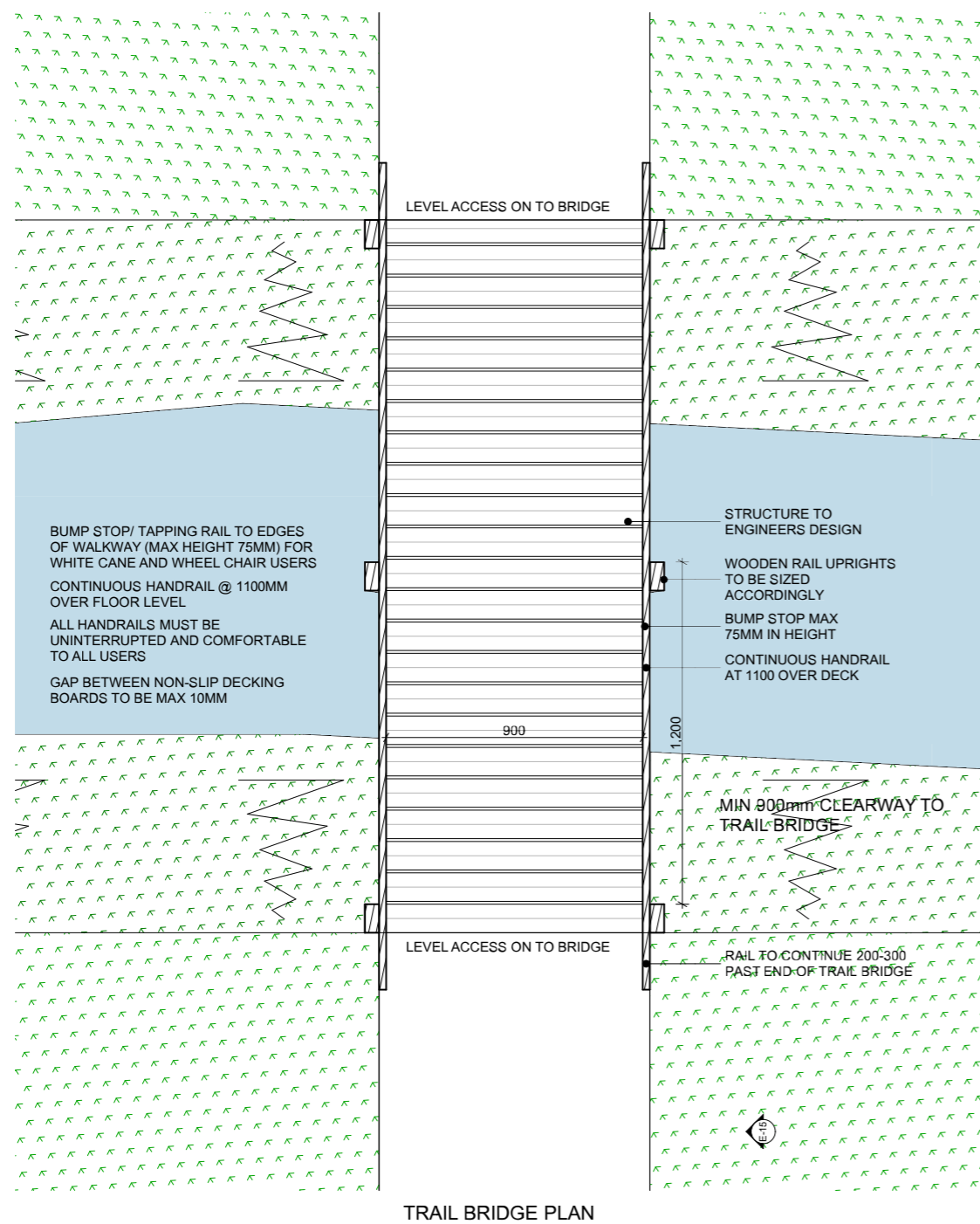


KISSING GATE ISOMETRIC

<b>C FLYNN ENGINEERING SERVICES MARINA SYSTEMS BELTURBET CO. CAVAN PH. 049 95 22821</b>	
PROJECT: <b>KISSING GATE</b>	
:	
CLIENT: <b>INLAND FISHERIES IRELAND</b>	
COPYRIGHT © FLYNN ENGINEERING	
DATE: <b>27.11.15</b>	DRAWN BY: <b>A FARRELLY</b>
	REV: <b>-</b>

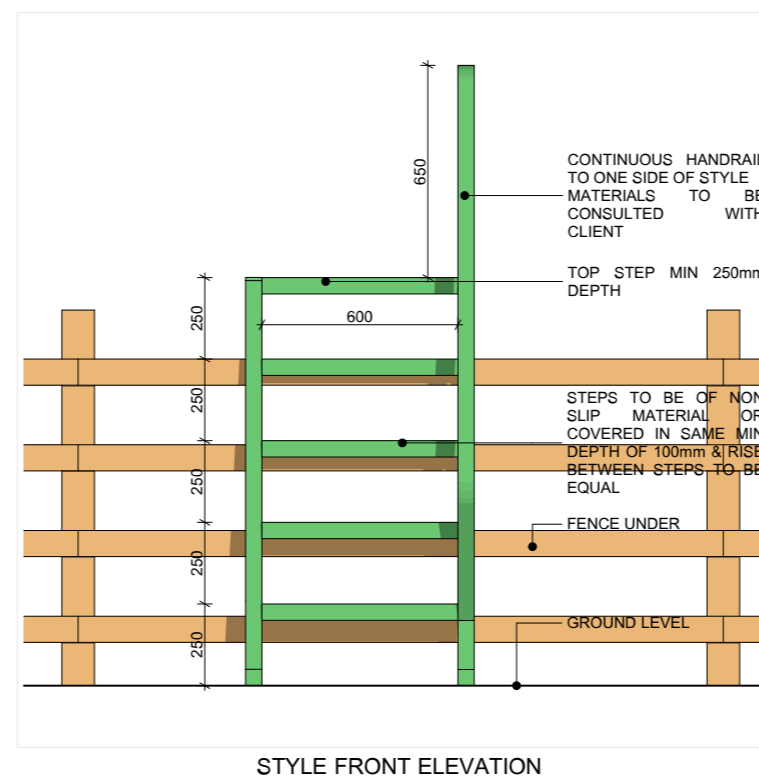
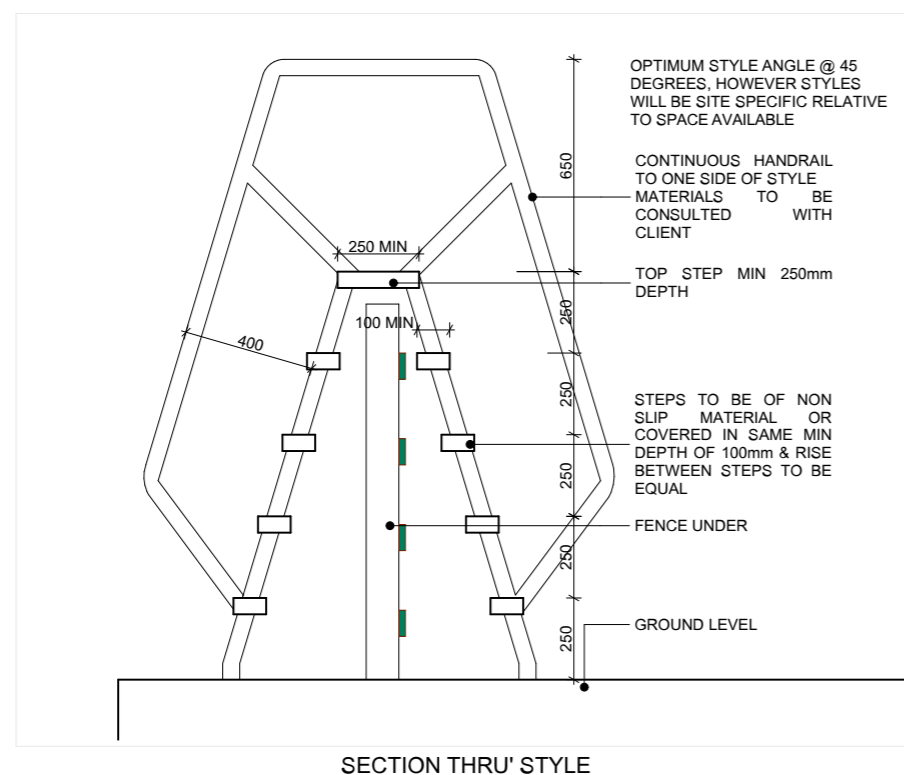
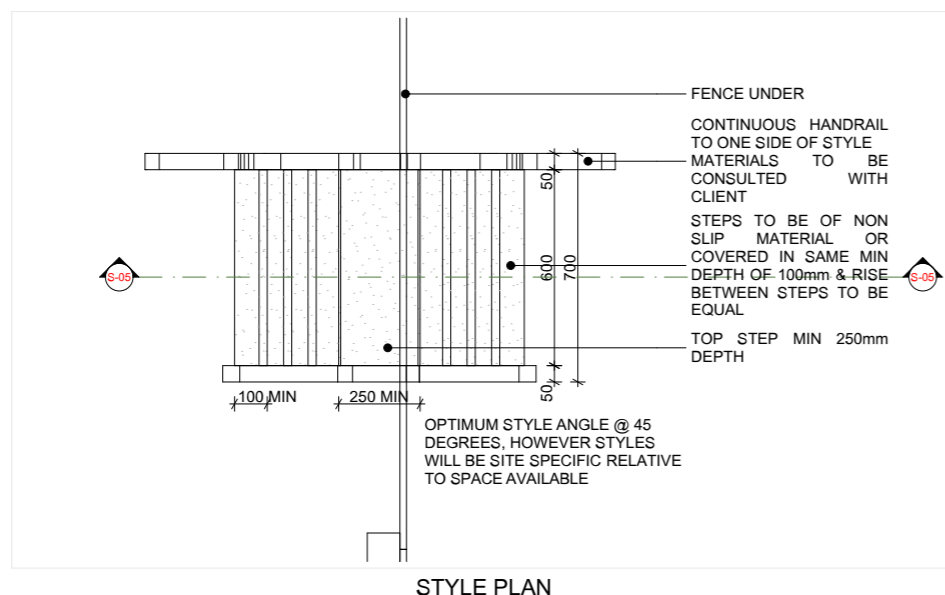


<b>C FLYNN ENGINEERING SERVICES</b> MARINA SYSTEMS BELTURBET CO. CAVAN PH. 049 95 22821	
PROJECT: PEDESTRIAN BRIDGE	
:	
CLIENT: INLAND FISHERIES IRELAND	
COPYRIGHT C FLYNN ENGINEERING	
DATE: 27.11.15	DRAWN BY: A FARRELLY
REV:	-

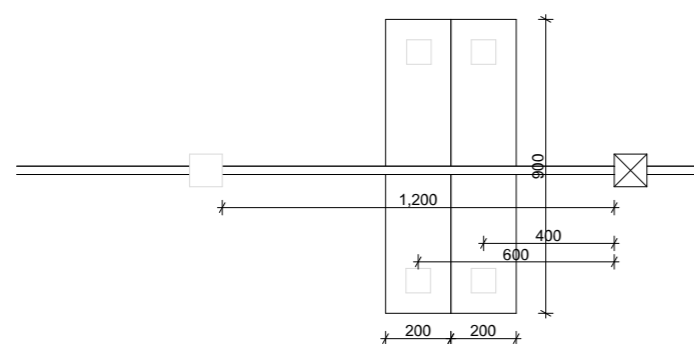


<b>C FLYNN ENGINEERING SERVICES MARINA SYSTEMS BELTURBET CO. CAVAN PH. 049 95 22821</b>	
PROJECT: <b>TRAIL BRIDGE</b>	
:	
CLIENT: <b>INLAND FISHERIES IRELAND</b>	
COPYRIGHT C FLYNN ENGINEERING	
DATE: <b>27.11.15</b>	DRAWN BY: <b>A FARRELLY</b>
REV:	-

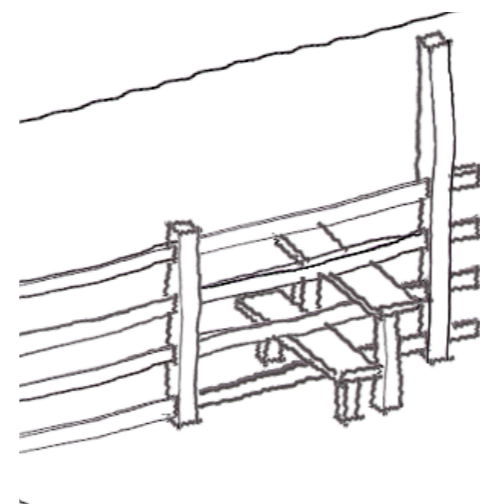




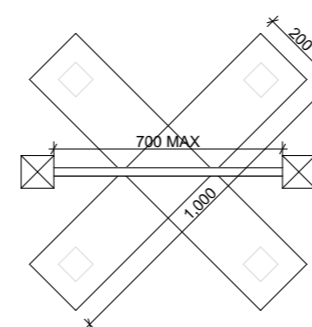
<b>C FLYNN ENGINEERING SERVICES MARINA SYSTEMS BELTURBET CO. CAVAN PH. 049 95 22821</b>	
PROJECT: <b>STYLE OVER FENCE</b>	
:	
CLIENT: <b>INLAND FISHERIES IRELAND</b>	
COPYRIGHT C FLYNN ENGINEERING	
DATE: <b>27.11.15</b>	DRAWN BY: <b>A FARRELLY</b>
	REV: <b>-</b>



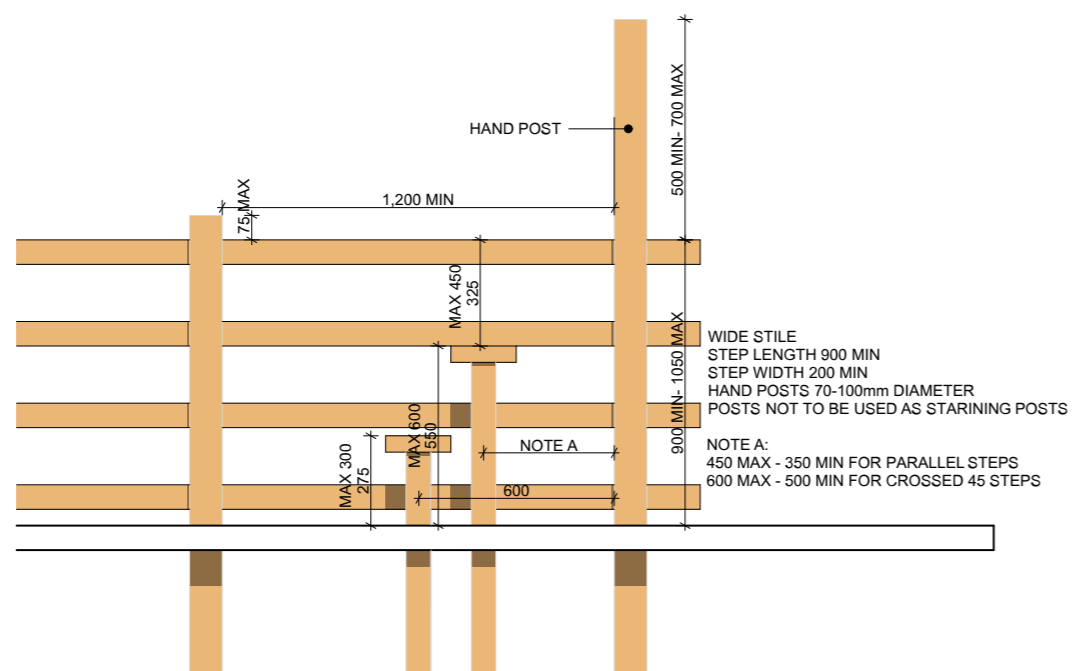
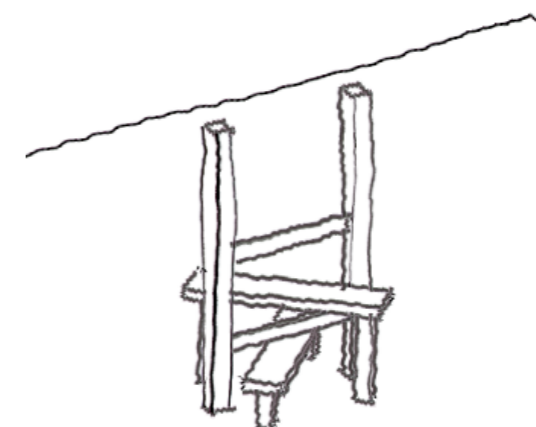
WIDE STILE PLAN



NOTE: WHERE THE STILE ROUTE IS ON A STEEP SLOPE, THE DOWNHILL SIDE MAY HAVE A THIRD STEP. THIS STEP MUST BE TWICE THE WIDTH OF A STANDARD STEP AND THE 300 MAX STEP HEIGHT RULE APPLIES



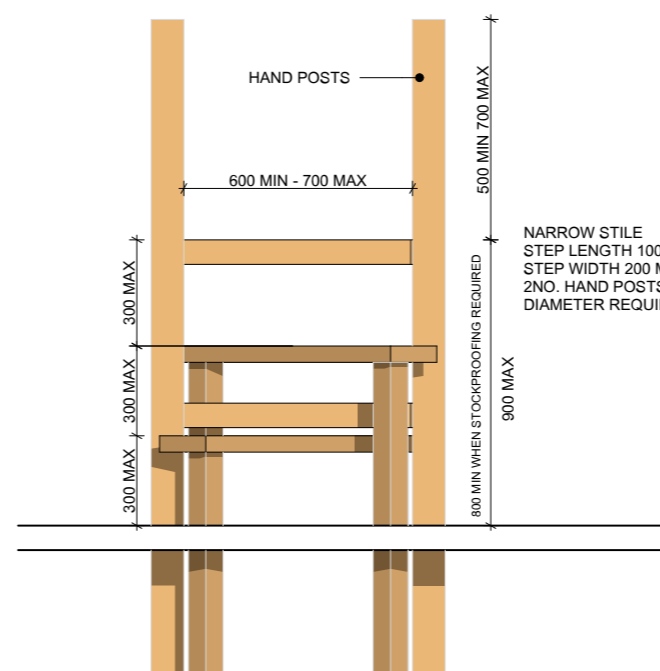
NARROW STILE PLAN



WIDE STILE ELEVATION

WIDE STILE  
STEP LENGTH 900 MIN  
STEP WIDTH 200 MIN  
HAND POSTS 70-100mm DIAMETER  
POSTS NOT TO BE USED AS STARING POSTS

NOTE A:  
450 MAX - 350 MIN FOR PARALLEL STEPS  
600 MAX - 500 MIN FOR CROSSED 45 STEPS



NARROW STILE

NARROW STILE  
STEP LENGTH 1000 MIN  
STEP WIDTH 200 MIN  
2NO. HAND POSTS 70-100mm  
DIAMETER REQUIRED

**C FLYNN ENGINEERING SERVICES**  
**MARINA SYSTEMS**  
**BELTURBET**  
**CO. CAVAN**  
**PH. 049 95 22821**

PROJECT:  
**STILES**

CLIENT:  
**INLAND FISHERIES IRELAND**

COPYRIGHT © FLYNN ENGINEERING

DATE:  
27.11.15

DRAWN BY:  
A FARRELLY

REV: